



WASHINGTON
CONSERVATION
DISTRICT

455 HAYWARD AVE N
OAKDALE, MN 55128

651-330-8220 [PHONE]

651-330-7747 [FAX]

WWW.MNWCD.ORG

Invasive Species Management in Washington County *Targeting 5 Terrestrial Invasive Species*



The Trespasser's Garden.
Color-Reduction Woodcut

Artist Emily Gray Koehler
www.studioegk.com

WCD Board Meeting October 11th, 2017

Tara Kelly, Landscape Restoration Specialist

Tara Kline, Natural Resource Specialist

Definitions

Invasive: an alien species whose introduction does or is likely to cause economic or environmental harm to human health.

Exotic/non-native/alien: those that occur outside their natural range boundaries, most often mediated by humans either deliberately or unintentionally.



Tansy (*Tanacetum vulgare*)



WASHINGTON CONSERVATION DISTRICT

455 HAYWARD AVE N
OAKDALE, MN 55128

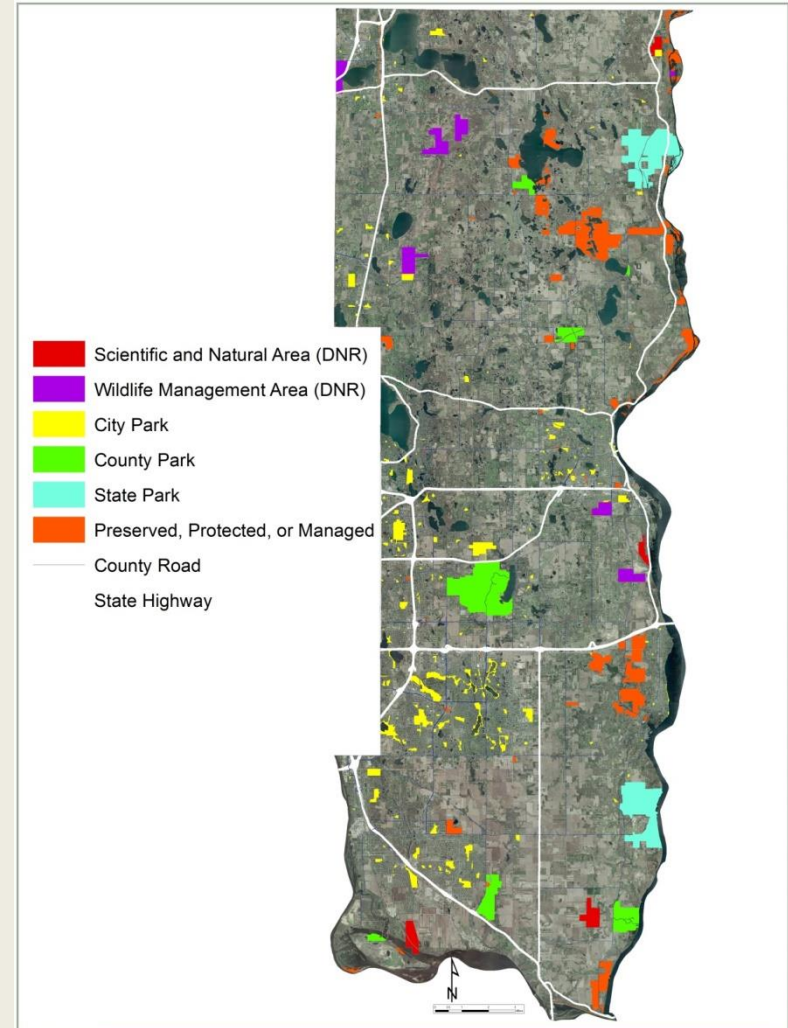
651-330-8220 [PHONE]

651-330-7747 [FAX]

WWW.MNWCD.ORG

Cooperative Weed Management Areas

- A partnership of federal, state, and local government agencies, tribes, individuals, and various groups that manage noxious weeds or invasive plants in a defined area.
- Defined geographical area
- MDNR, MDA, MNDOT, BWSR, NPS, NRCS watershed districts
- City and County Parks
- Non-profits, land trusts, Nature Centers
- Landowners



Cooperative Weed Management Grant

GRANT BACKGROUND:

- 2016, WCD Awarded Cooperative Weed Management Grant through Clean Water Land and Legacy Amendment Funding(3 year grant)
 - \$15K total. 50% program development, 50% removal assistance

TIMELINE:

- Year 1 Outreach (Many site visits conducted and funding distributed this fall/winter)
- Year 2 & 3 landowners will begin removal

LONG TERM:

- Minnesota Department of Ag (MDA) has additional grant funding to help landowners battle Grecian Foxglove & Oriental Bittersweet after going through our grant program.



Cooperative Weed Management Grant

For Noxious Invasive Weeds

The Washington Conservation District received a BWSR Clean Water Fund grant to help landowners manage noxious invasive weeds. The goal of this grant is to protect native plant communities that can be taken over by noxious invasive weeds by working with organizations and landowners in Washington County. Noxious invasive weeds can harm the environment and some are dangerous to people and animals.

Phase I: In 2016, we will be focusing on project development and outreach to identify the areas of greatest need and interested landowners.

Phase II: In 2017 and 2018, we will begin funding control efforts in high priority areas.

Are any of these noxious weeds invading on your property? Let us know! We can help.

1. Grecian Foxglove:

Digitalis lanata

THIS PLANT IS TOXIC. DO NOT TOUCH.

This is a broadleaf perennial plant that can be fatal to horses and cattle if ingested. People may also be adversely affected.



2. Oriental bittersweet:

Celastrus orbiculatus

This vine has been used for holiday decor, but this plant can overtake and destroy forests and grasslands.



3. Garlic Mustard:

Alliaria petiolata

This early season plant invades woodlands and riparian areas, as well as roadsides and trails.

4. Buckthorn:

Rhamnus cathartica

Frangula alnus

Buckthorn out-competes native plants and degrades wildlife habitat. Soil erosion is worse in areas where buckthorn is present.

5. Japanese Knotweed:

Polygonum cuspidatum

A perennial that can form large colonies. Its stems can reach up to 10 feet tall and resembles bamboo. Control is difficult.

Includes 5 Invasive Species

1. Grecian Foxglove
2. Oriental Bittersweet
3. Garlic Mustard
4. Buckthorn
5. Japanese Knotweed



To sign up for a site visit:
tinyurl.com/CWMA2016
www.mnwcd.org/CWMA

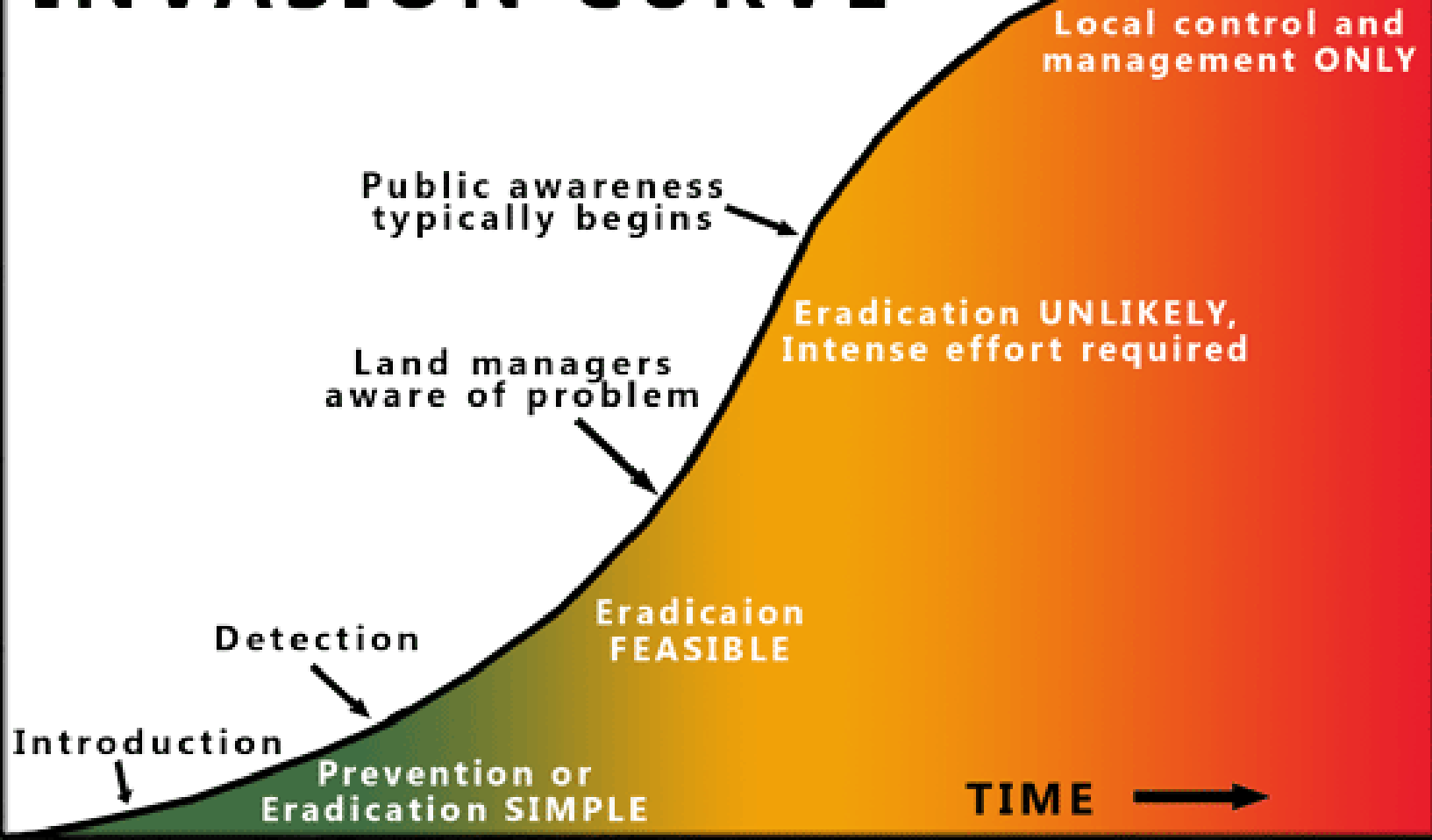
For more info contact: Tara Kline
455 Hayward Ave N. Oakdale, MN
tkline@mnwcd.org
651-330-8220 x.28



INVASION CURVE

AREA INFESTED ↑

CONTROL COSTS ↑



Introduction

Detection

Land managers aware of problem

Public awareness typically begins

Prevention or Eradication SIMPLE

Eradiation FEASIBLE

Eradiation UNLIKELY, Intense effort required

Local control and management ONLY

TIME →

Lag Phase

Exponential Growth

Carrying Capacity

Example : 1

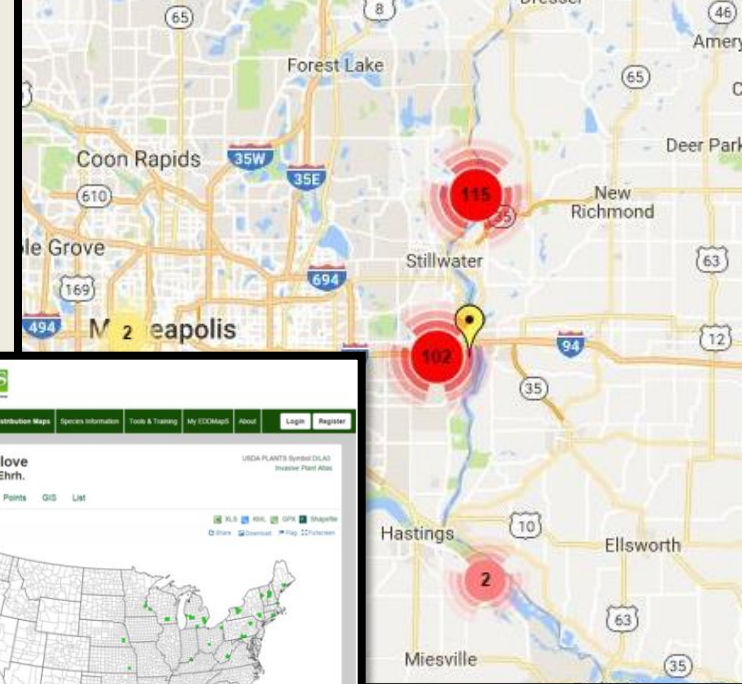
Grecian Foxglove, (*Digitalis lanata*)

Eradication is Possible for Grecian Foxglove!

- Grecian Foxglove is very localized in Washington County
(*plant is toxic, do not touch*)
- Northern and Southern populations
- Strategy of outreach to halt it's spread
- Control of existing populations

MDA has additional funding for Grecian Foxglove to support WCD current efforts and work with landowners. In addition they are tracking the spread through their EDD MapS on their website. (See photos of current known populations).

<https://www.eddmaps.org/distribution/viewmap.cfm?sub=13990>



Example 2: Buckthorn

(Rhamnus cathartica, Frangula alnus)

- Deciduous shrub or small tree
- Sub-opposite leaves with small thorn on the end
- Male and female plants, only the females produce berries



Summary:

- Held several workshops, Master Gardeners, Sentence to Serve, County Fair, LGU, Belwin
- Successful outreach
- Connected landowners with MDA
- January 2016 meeting of CWMA partners (17 attendees)

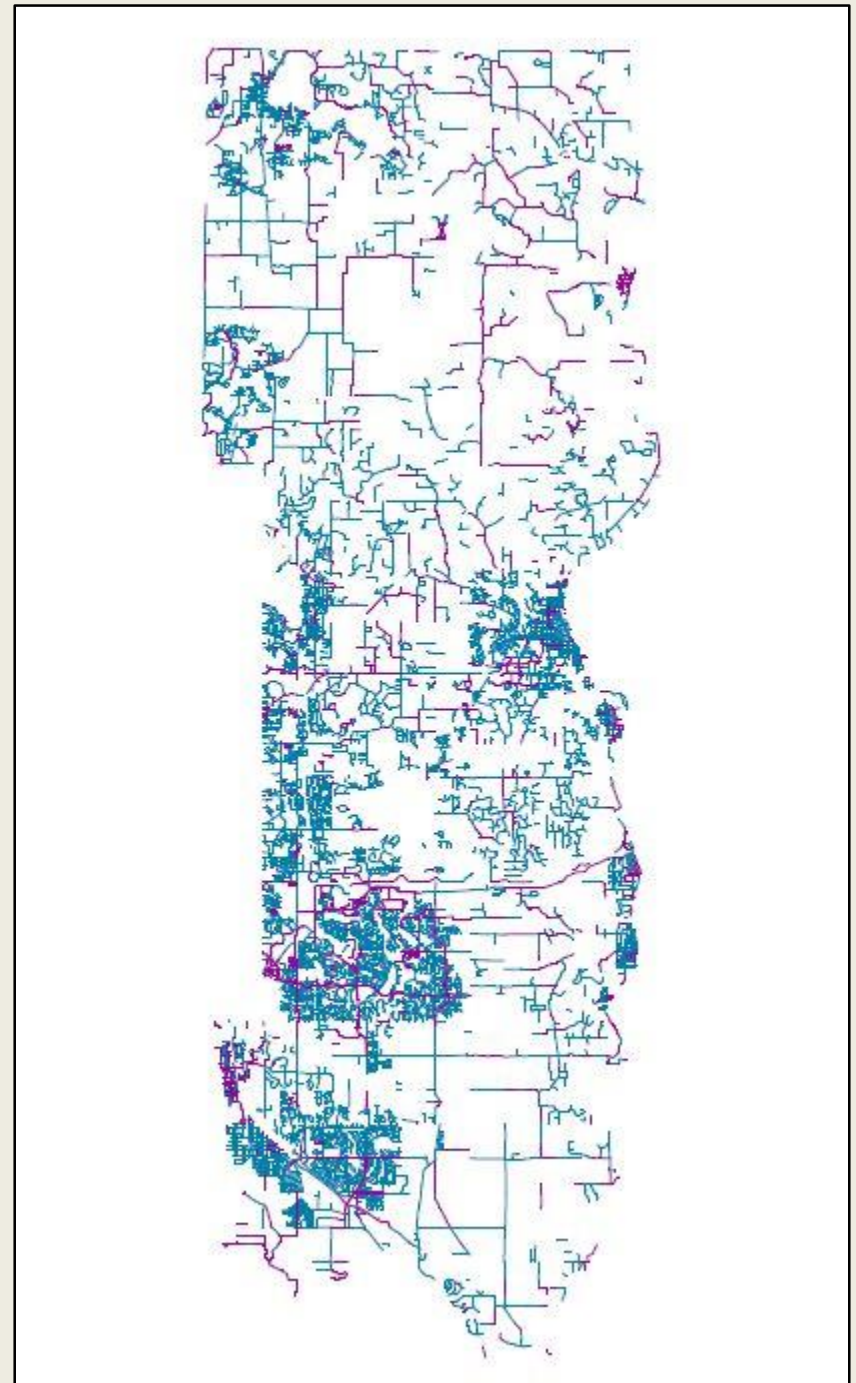


Photo: Conservation Corps spraying Grecian foxglove.

Next Steps 2018 CWMA:

- Focus on providing technical assistance to LGUs to improve their invasive species removal programs.
- January 2018 CWMA partner meeting

Photo: Local roads in Washington County





WASHINGTON
CONSERVATION
DISTRICT

455 HAYWARD AVE N
OAKDALE, MN 55128

651-330-8220 [PHONE]

651-330-7747 [FAX]

WWW.MNWCD.ORG

Get the word out!

- Help report invasive species on EDD MapS.

Additional Grants

- Watershed District Plant Grant & Buckthorn Grant

Board Request

- Motion to approve continued efforts to build the CWMA in Washington County



PlayCleanGo.org

THANK YOU!

Tara Kelly, Tara Kline

